

PRODUCT DESCRIPTION

LEDirect 6W MR GU10 is designed and uses the latest LED technology. Its innovative thermal solution and proprietary driving circuit has made this lamp one of the leading MR16 lamps in the industry. LEDirect GU10 MR16 is capable of providing luminance equivalent to a 25 Watt incandescent while using only 24% of power consumption.

Specifically designed for its optic delivery at the highest level of light and quality, this lamp can be valued by the most demanding lighting professionals. This lamp is ideal for high profile lighting applications, such as museums, jewelry stores, boutiques, restaurants, etc.

Replace your existing GU10 MR16 with LEDirect 6W MR16 GU10 today and experience benefits such as a lower electric bill, lower maintenance costs, and more durability. This lamp is also more beneficial to the environment as it has reduced levels of CO2 emission and does not contain UV or IR.

BENEFITS & FEATURES

Replace Halogen GU10 directly up to 25 Watt, Compatible with most TRIAC dimmers*, Superior Color Consistency by Proprietary Binning Control, Remarkable Lumen Maintenance with 70% initial output at 25,000 hours, No harmful UV or infrared radiation, Environmentally Friendly, RoHS Compliant

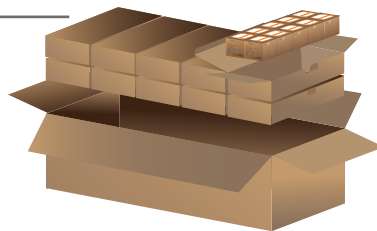
* Please consult your retailer for the recommendation of compatible dimmers.

ENERGY SAVING & CO2 REDUCTION

	Incandescent	LED MR16
Power Consumption	25W	6W
Energy Saving	--	76%
CO2 Emission (Annually)	140 kg	233.6 kg

PACKAGE

Packaging Qty - 1 : 10 : 100

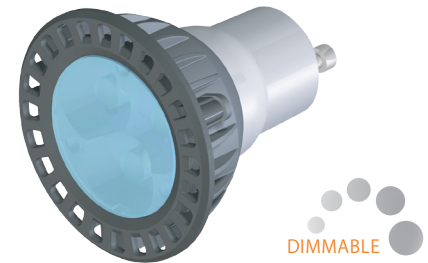


ORDER CODES

CCT	Beam Angle	Item #	Order Codes	Case Qty
2700K	25°	5603	LHO-6MR16/GU10/NFL/27K	10
3000K	25°	5621	LHO-6MR16/GU10/NFL/30K	10

LAMP

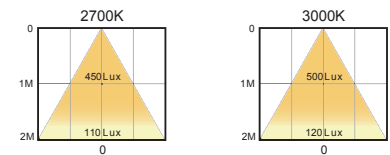
LED-6W MR16 GU10



SPECIFICATIONS

Base	GU10
CCT	2700/3000
CRI	> 80
Beam Angle	25°
Lumen Output	2700K : 220Lm 3000K : 220Lm
Power Consumption	6W
Voltage	120V ac
Power Factor	>0.7
Weight	1.86 oz

ILLUMINANCE DISTRIBUTIONS



Beam Angles 25° (Unit: Lux)